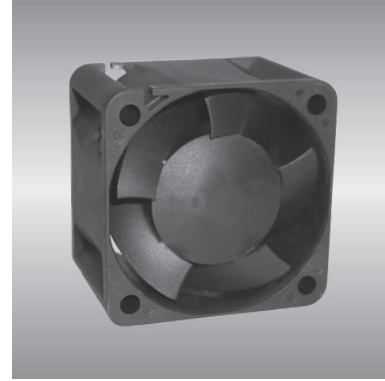


# 40 AG series

x40x28mm



## General Specifications

- Motor : 4 Poles brushless DC motor
- Frame & Impeller : Plastic(UL 94V-0)
- Storage temperature : -40° to +75°
- Operating temperature : -10° to +70°

## Major Characteristic Parameters

Model	*Bearing System	Rated Voltage	Operating Voltage Range	Rated Current	Rated Speed	Maximum Air Flow		Maximum Static Pressure		Sound Level	Weight
Part NO.	B / S / F	V	V	A	RPM	m <sup>3</sup> /min	CFM	mm-H <sub>2</sub> O	In-H <sub>2</sub> O	dBA	g
AGV04028B12H	B	12	7.0~13.2	0.30	13000	0.43	15.2	23.37	0.92	42.6	40
AGV04028B12U	B	12	7.0~13.2	0.40	15000	0.51	17.8	30.48	1.20	46.4	40
AGV04028B12V	B	12	7.0~13.2	0.60	17000	0.61	21.3	38.86	1.53	49.5	40

\*Bearing system B: Two Ball Bearing F: Fluid Bearing S: Sleeve Bearing

